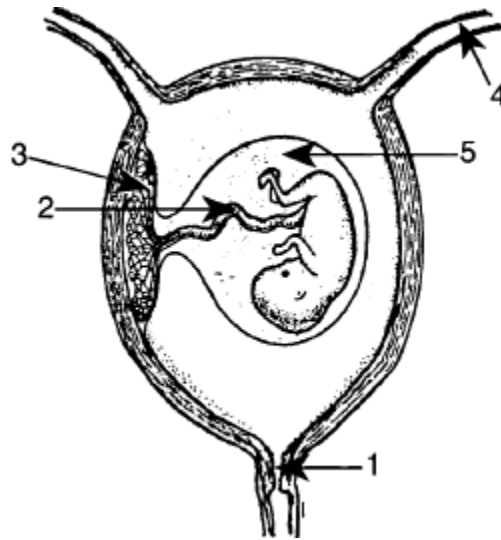


Human Development



	Structure	Function
1	cervix	Boundary between uterus and vagina (dilates during labor)
2	Umbilical cord	Transports nutrients/wastes between mother and fetus
3	Placenta	Temporary organ that develops out of uterine wall, where nutrients/wastes diffuse from mother and fetus
4	Fallopian tube (oviduct)	Site of fertilization
5	Amniotic sac	Fluid-filled sac that protects fetus from shock